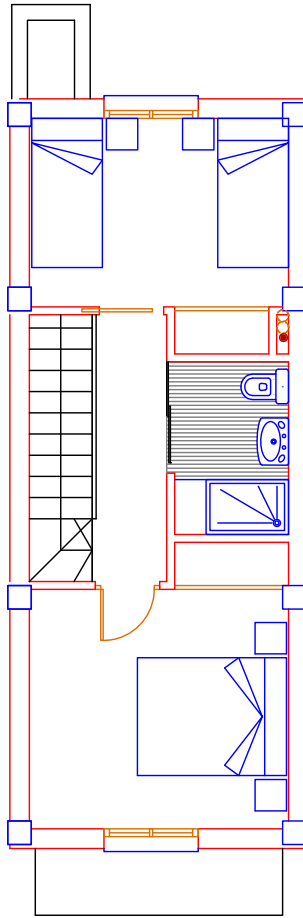
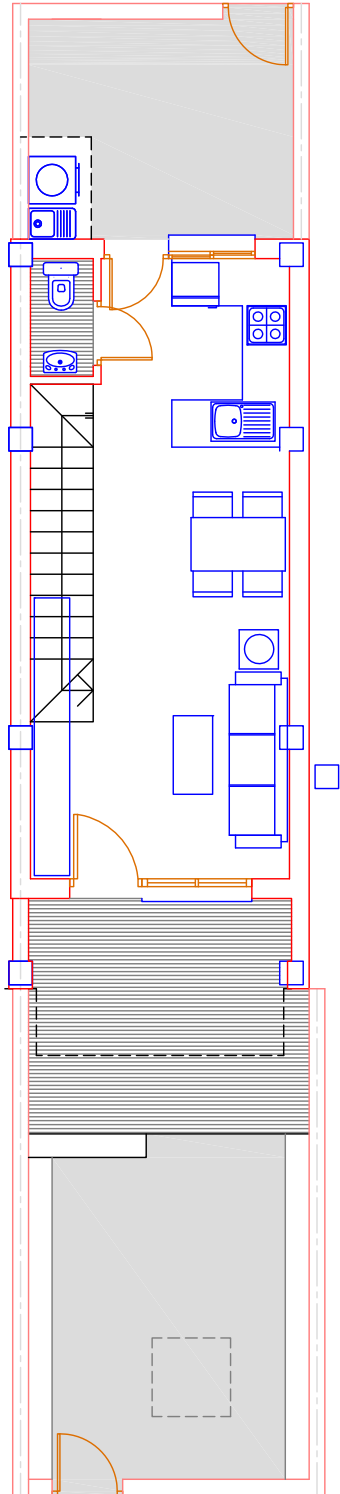
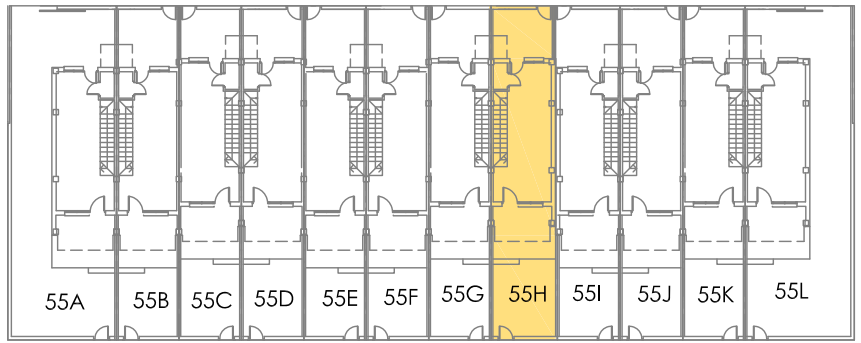


55H



MODELO-A

SUP. PL.BAJA	30,87 m ²
SUP. PL.ALTA	35,09 m ²
TERRAZA CUBIERTA	6,82 m ²

TOTAL SUP. CONSTR 72,78 m²

+ TERRAZA DESC	4,00 m ²
JARDIN + PATIO	28,43 m ²

SUPERFICIE PARCELA : 70,12 m²

